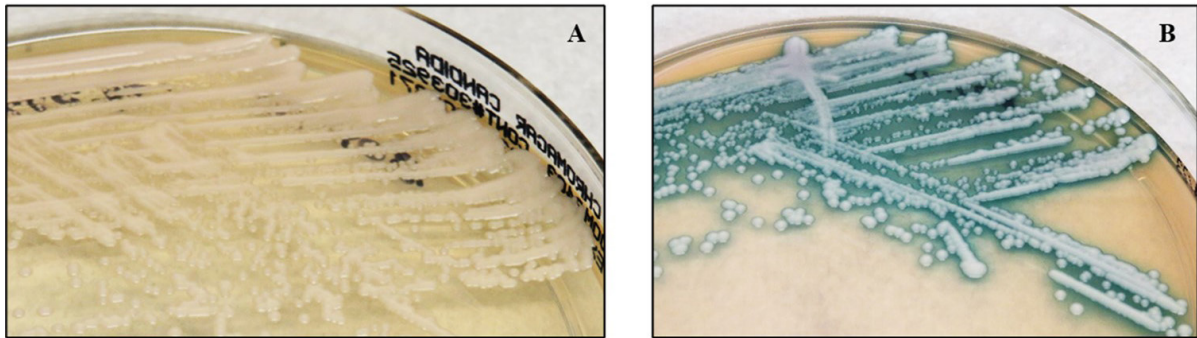


Figure 1: The colonial appearance of *C. auris* on CHROMagar Candida and CHROMagar Candida PLUS.



(A) shows growth of *C. auris* on CHROMagar Candida; the appearance is of white colonies that cannot be distinguished between *Candida* species.

(B) shows growth of *C. auris* on CHROMagar Candida PLUS; the appearance is of characteristic light blue colonies with a blue halo. This specialised agar specifically allows distinction of *C. auris* from other *Candida* species.