

Cannabis—don't smoke it! Four cannabis-related pathologies in one radiograph

Kate Grant, Vivienne Campbell, Lutz Beckert

A 34-year-old man presented with two weeks of cough, unrelenting rib pain and shortness of breath. He has smoked three joints per day for seven years and also has a 12-pack year history of cigarette smoking.

His CT-chest revealed four distinct pathologies relating to his cannabis and cigarette smoke exposure: a) pneumothorax, b) emphysematous bulla, c) primary bronchogenic carcinoma and d) a rib metastasis.

The medicinal properties of cannabis are currently being re-evaluated and the clinical evidence is still evolving. However, cannabis smoking has been linked to an increased risk of lung cancer. One joint of cannabis has a similar toxic effect to one packet of cigarettes.¹ Heavy cannabis smoking is also associated with lung bullae² and an increased risk of pneumothoraces.³

Figure 1:

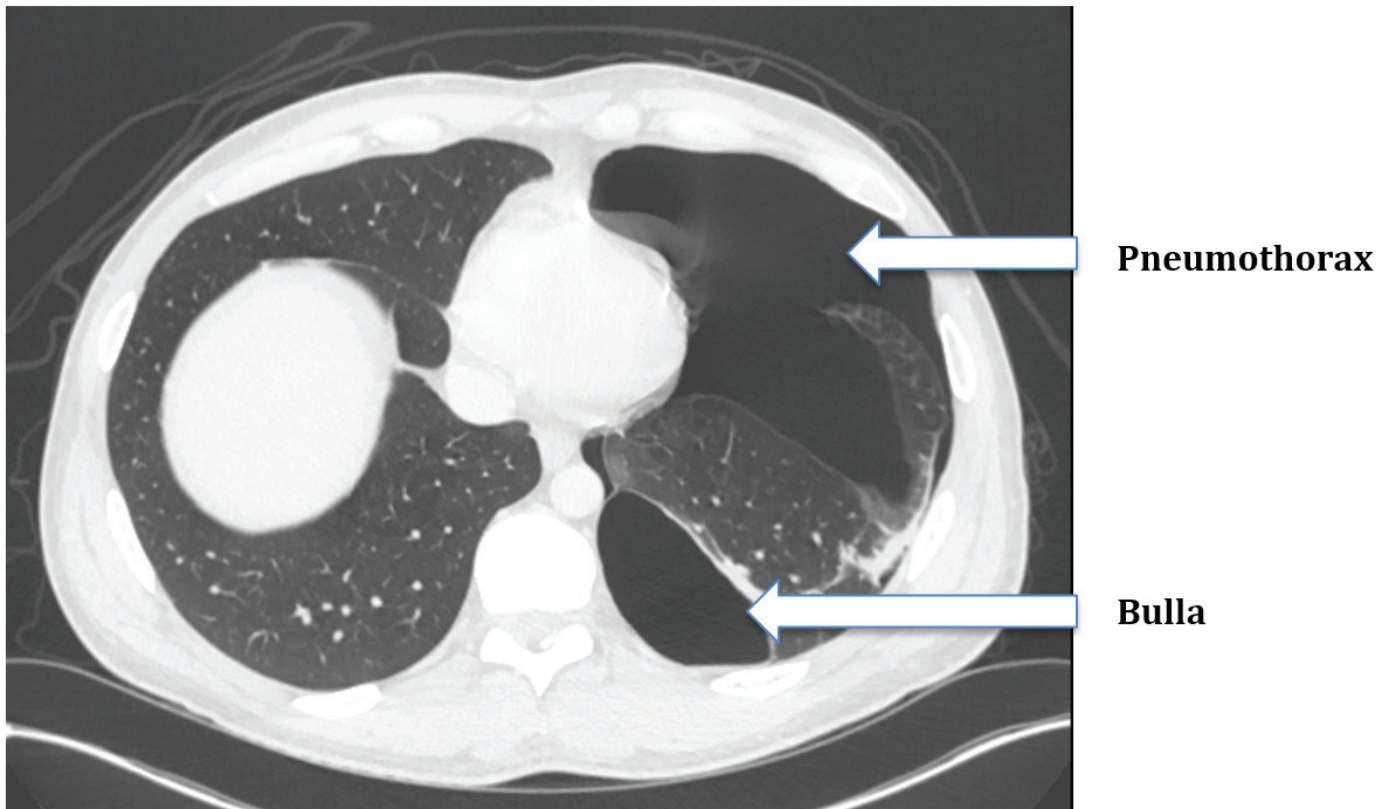
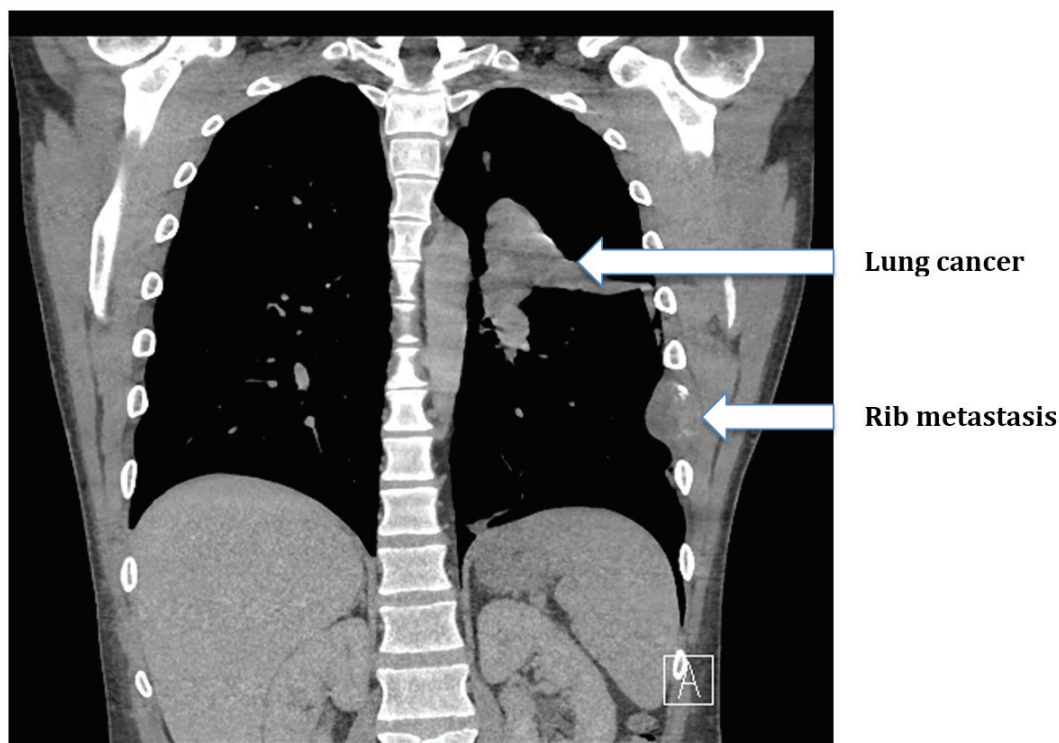


Figure 2:

**Competing interests:**

Nil.

Author information:

Kate Grant, Respiratory House Officer, Department of Respiratory Medicine, Canterbury District Health Board, Christchurch; Vivienne Campbell, Respiratory Registrar, Department of Respiratory Medicine, Canterbury District Health Board, Christchurch; Lutz Beckert, Respiratory Physician, Department of Respiratory Medicine, Canterbury District Health Board, Christchurch.

Corresponding author:

Professor Lutz Beckert, Respiratory Physician, Department of Respiratory Medicine, Canterbury District Health Board, Christchurch 8140.

lutz.beckert@cdhb.health.nz

URL:

<http://www.nzma.org.nz/journal/read-the-journal/all-issues/2010-2019/2018/vol-131-no-1471-9-march-2018/7519>

REFERENCES:

1. Aldington S, Harwood M, Cox B, Weatherall M, Beckert L, Hansell A, et al. Cannabis use and risk of lung cancer: a case-control study. *Eur Respir J*. 2008 Feb; 31(2):280–6.
2. Johnson MK, Smith RP, Morrison D, Laszlo G, White RJ. Large lung bullae in marijuana smokers. *Thorax*. 2000 Apr; 55(4):340–2.
3. Beshay M, Kaiser H, Niedhart D, Reymond MA, Schmid RA. Emphysema and secondary pneumothorax in young adults smoking cannabis. *Eur J Cardiothorac Surg*. 2007 Dec; 32(6):834–8.