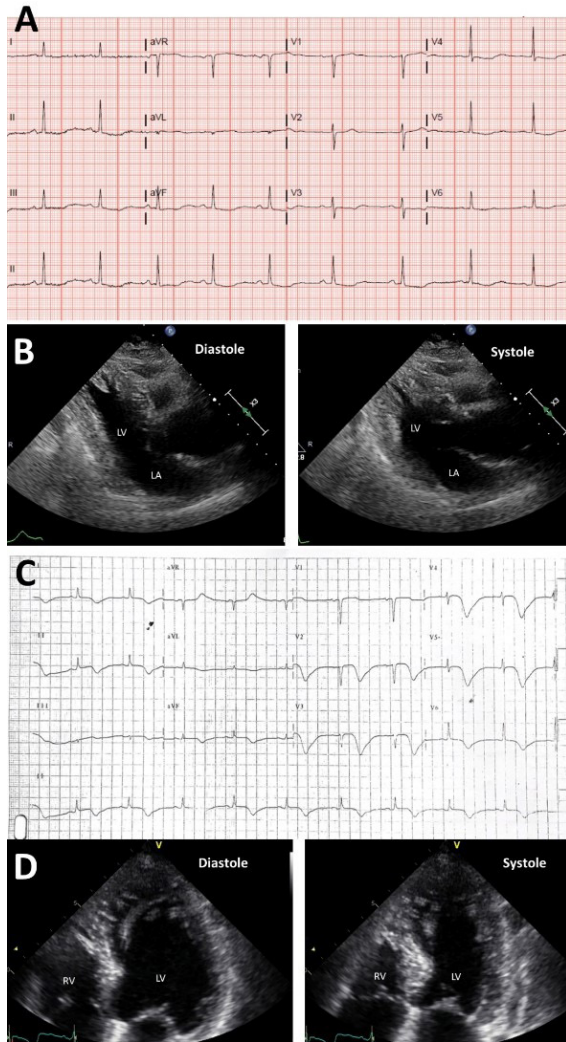


Figure 1: A. Electrocardiogram (ECG) on admission demonstrated normal sinus rhythm with no ischaemic changes and prolonged QTc.

B. Echocardiography showed akinesia of the basal segments and hypercontractility of the mid to apical segments of the left ventricle consistent with basal or reverse type of Takotsubo syndrome.

C. ECG 14 years ago showed global giant T-wave inversions with prolonged QTc.

D. Echocardiography 14 years ago showed akinesia of the mid to apical segments and hypercontractility in the basal segments of the left ventricle consistent with apical type of Takotsubo syndrome.



LV = left ventricle; LA = left atrium; RV = right ventricle