

Figure 1: Histopathology findings on hematoxylin-eosin staining of the pustules show small plaques of parakeratosis in the keratin layer, as well as neutrophil scale crust. The underlying epidermis was mildly acanthotic and showed a mild degree of basal spongiosis. Neutrophils and lymphocytes are present within the papillary dermis, which shows a mild degree of oedema. a) 100x magnification, b) 200x magnification, and c) 400x magnification.

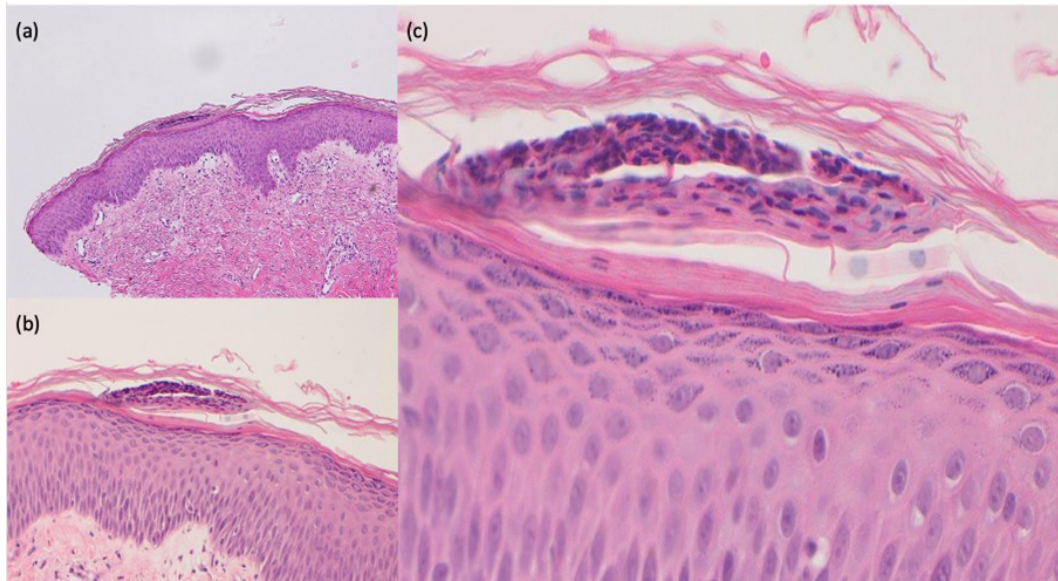


Figure 2: The posterior trunk with a patchy and confluent erythematous rash studded with fine pseudo-pustulosis and annular peeling.



Figure 3: The anterior side of the abdomen shows a patchy and confluent erythematous rash studded with fine pseudo-pustulosis and peripheral circular peeling.

