

Table 1: Exposure and probability of arriving X years ago for different values of proxy-year for the New Zealand Health Survey 2016/2017.

Year surveyed: 2016.5 to 2017.5	“Years since arrival” 2017–arrival year	Potential time spent in Aotearoa New Zealand (years)	Average time exposed in “last year” (years)	Probability of being in each time period										Years in Aotearoa New Zealand (for modelling)
				Time period (years)										
Stated year of arrival				0–0.5	0.5–1	1–1.5	1.5–2	2–2.5	2.5–3	3–3.5	3.5–4	4–4.5	...	
2017	0	0–0.5	0.17	1										0
2016	1	0–1.5	0.57	0.8603		0.1397								0
2015	2	0.5–2.5	0.98		0.1286	0.7488		0.1226						1
2014	3	1.5–3.5	1				0.1277	0.7511		0.1212				2
2013	4	2.5–4.5	1						0.1278	0.7501		0.1223		3
etc...														

Table 2: Socio-demographic statistic of new migrants, old migrants and Aotearoa New Zealand-born respondents.

	Immigration status							
	New migrants		Old migrants		Born in Aotearoa New Zealand		New vs born	Old vs born
	(n=3,716)		(n=6,102)		(n=31,058)			
	%	95% CI	%	95% CI	%	95% CI	p-value	p-value
Age group								
15–24	22.6	21.0–24.3	8.3	7.3–9.4	19.1	18.8–19.5	0.0003	0.0000
25–34	34.1	32.4–35.8	12.1	11.1–13.2	14.8	14.4–15.1	0.0000	0.0001
35–44	22.6	21.3–24.0	14.6	13.6–15.7	14.6	14.2–14.9	0.0000	0.8816
45–54	11.8	10.6–13.1	21.5	20.4–22.7	16.7	16.4–17.1	0.0000	0.0000
55–64	4.9	4.2–5.8	18.1	17.0–19.3	15.5	15.2–15.8	0.0000	0.0003
65–74	3.0	2.4–3.7	14.0	13.1–15.0	11.2	10.9–11.4	0.0000	0.0000
75+	1.0*	0.7–1.4	11.3	10.6–12.0	8.1	7.9–8.3	0.0000	0.0000
Sex								
Female	50.1	48.4–51.9	51.0	49.6–52.5	51.7	51.2–52.1	0.1321	0.5036
Male	49.9	48.1–51.6	49.0	47.5–50.4	48.3	47.9–48.8	0.1321	0.5036
Prioritised ethnicity (in priority order)								
Māori	0.5*	0.3–0.8	1.1	0.8–1.4	18.0	17.8–18.2	0.0000	0.0000
Pacific	6.5	5.7–7.4	12.7	11.8–13.5	3.1	3.0–3.4	0.0000	0.0000
Asian	49.7	47.6–51.7	28.4	27.1–29.7	1.4	1.2–1.7	0.0000	0.0000
Other	36.1	34.0–38.4	28.3	26.8–29.9	2.8	2.4–3.2	0.0000	0.0000
NZ European	7.2	6.2–8.4	29.5	28.0–31.1	74.6	74.1–75.1	0.0000	0.0000
New Zealand Deprivation Index Quintile								
1***	17.5	15.4–19.7	22.2	20.6–24.0	20.2	19.5–20.8	0.0398	0.0574
2	19.4	17.4–21.5	22.7	21.0–24.5	19.8	19.2–20.5	0.7341	0.0111
3	21.3	19.3–23.6	19.3	17.8–20.9	20.0	19.4–20.6	0.3002	0.5132
4	20.7	18.7–22.8	17.9	16.5–19.4	20.8	20.3–21.4	0.9178	0.0020
5***	21.1	18.7–23.6	17.8	16.5–19.2	19.2	18.5–19.8	0.2058	0.1445
Medical insurance								
Yes	34.2	32.0–36.4	36.2	34.4–38.2	34.6	33.7–35.5	0.7228	0.1209

Table 2 (continued): Socio-demographic statistic of new migrants, old migrants and Aotearoa New Zealand-born respondents.

Type of insurance (for those with medical insurance)								
Comprehensive**	66.0	62.1–69.7	46.5	43.4–49.7	47.4	45.6–49.2	0.0000	0.6330
Hospital only	26.1	22.8–29.7	42.2	39.0–45.4	43.0	41.1–45.0	0.0000	0.6430
Other	7.9	6.0–10.2	11.3	9.3–13.7	9.6	8.3–11.0	0.1682	0.1536

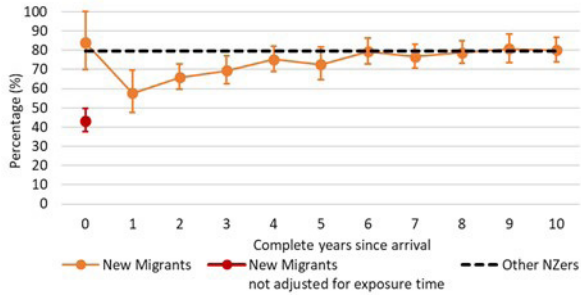
* Indicates that the relative sampling error of the estimate is between 0.3 and 0.5 and the estimate should be used with caution.

** Covers day-to-day costs such as general practitioner fees and pharmacy charges, as well as private hospital care.

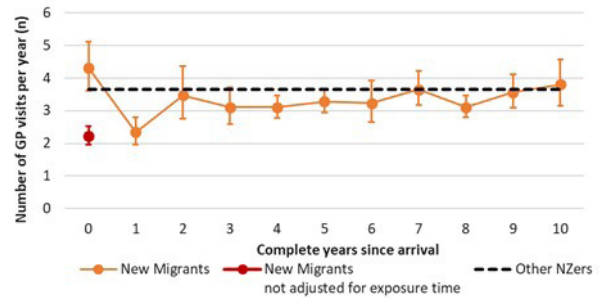
*** 1 represents people living in the least deprived areas and 5 represents people living in the most deprived areas.

Figure 1: Marginal means from log-linear models, adjusted for confounders, for new migrants over time since arrival and for other New Zealanders.

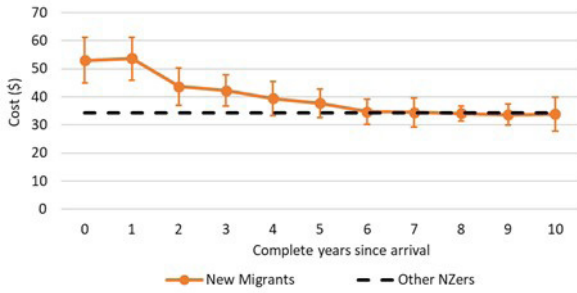
a) Last year GP use.



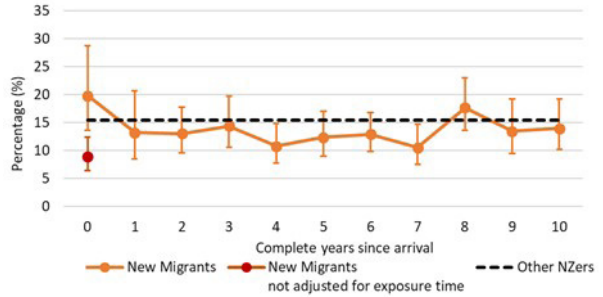
b) Number of GP visits in last year.



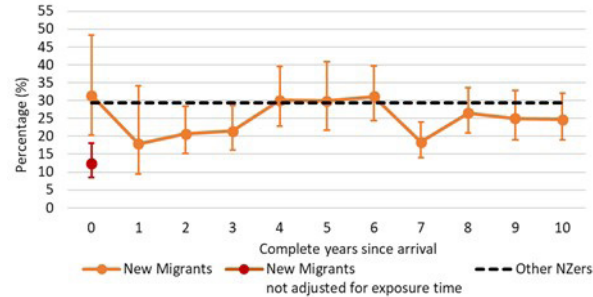
c) Cost of last GP visit.



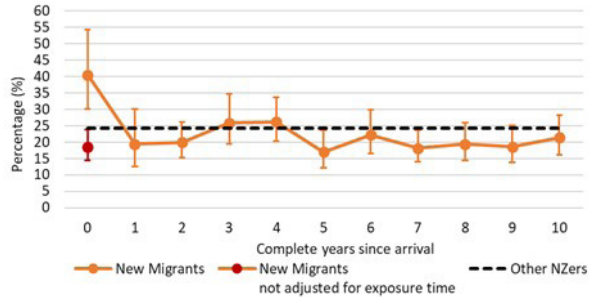
d) Barriers to primary healthcare.



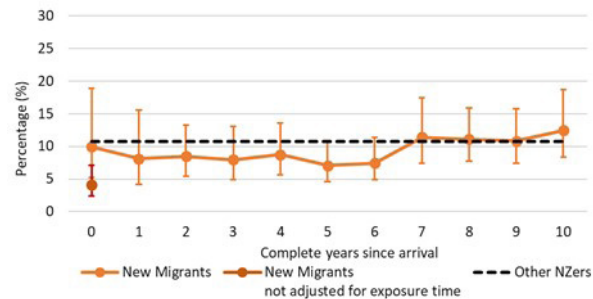
e) Last year practice nurse visits.



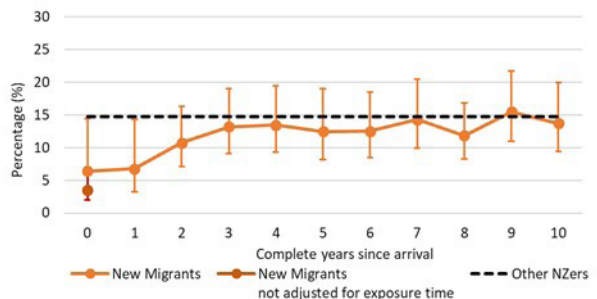
f) Last year pharmacist visit for personal health needs.



g) Last year use of after-hours medical centres.



h) Last year use of emergency departments.



i) Comprehensive health insurance cover.

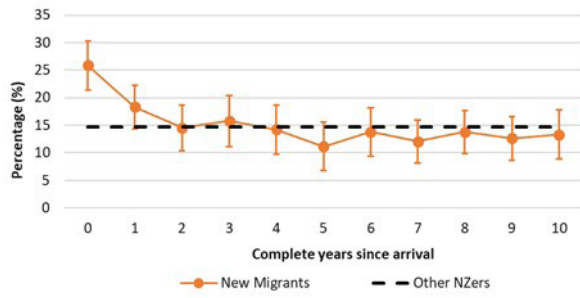


Figure 2: Interview dates of respondents in the New Zealand Health Survey 2017/2018 (personal communication: in an email from the Health Survey Team, Ministry of Health, 27 February 2019, on behalf of the Health and Disability Intelligence Group, HDI@moh.govt.nz; now healthsurvey@health.govt.nz).

