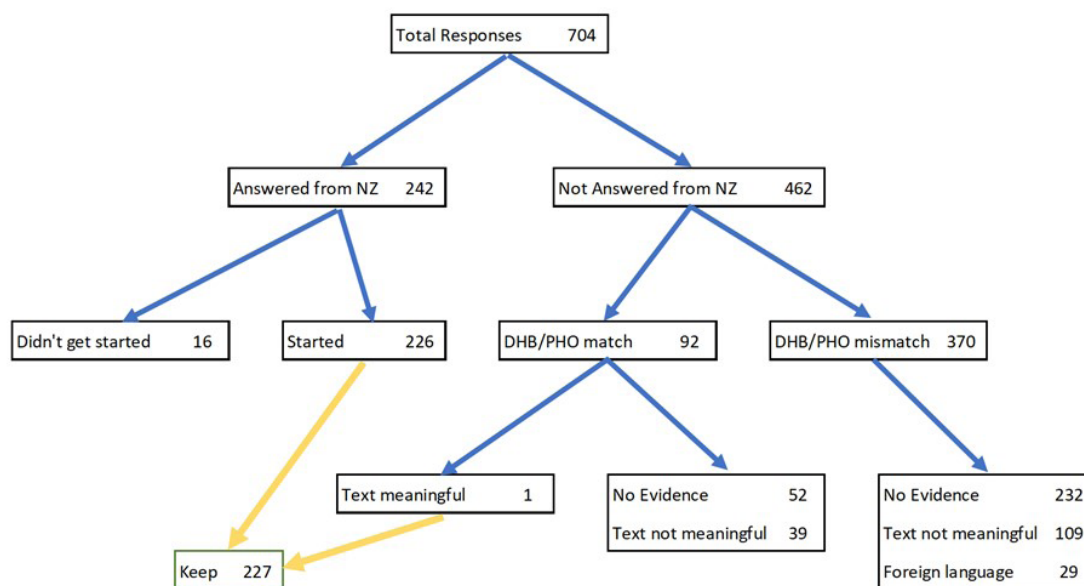


**Figure 1:** Survey sample selection.



“No evidence” refers to the respondent providing no text responses on which to base a judgement. “Text not meaningful” refers to providing text responses that were either not coherent or not applicable to the Aotearoa New Zealand context.

**Table 1:** Proportion of practices with closed books and limited enrolment 2019–2022 (n=225 respondents).

	2019	2020	2021	2022
<b>Fully closed</b>	7%	14%	21%	27%
<b>Fully open</b>	57%	44%	31%	28%
<b>Limited enrolment</b>	36%	42%	48%	45%

**Figure 2:** Evolution of closed books/limited enrolment prevalence (%) by a) ethnicity-enriched practices (n=193); b) VLCA status (n=197); c) average consultation fees (n=197); d) urban-rural setting (n=193); e) number of enrolees (n=198); and f) region (n=197).

