

Figure 1: STROBE diagram.

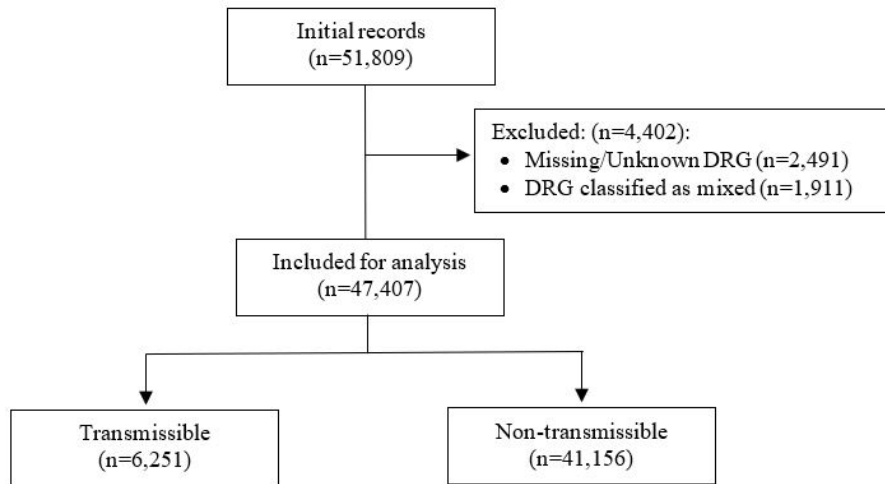


Figure 2: Monthly admissions to WRH GMS by disease type. Shaded areas represent the two lockdowns.

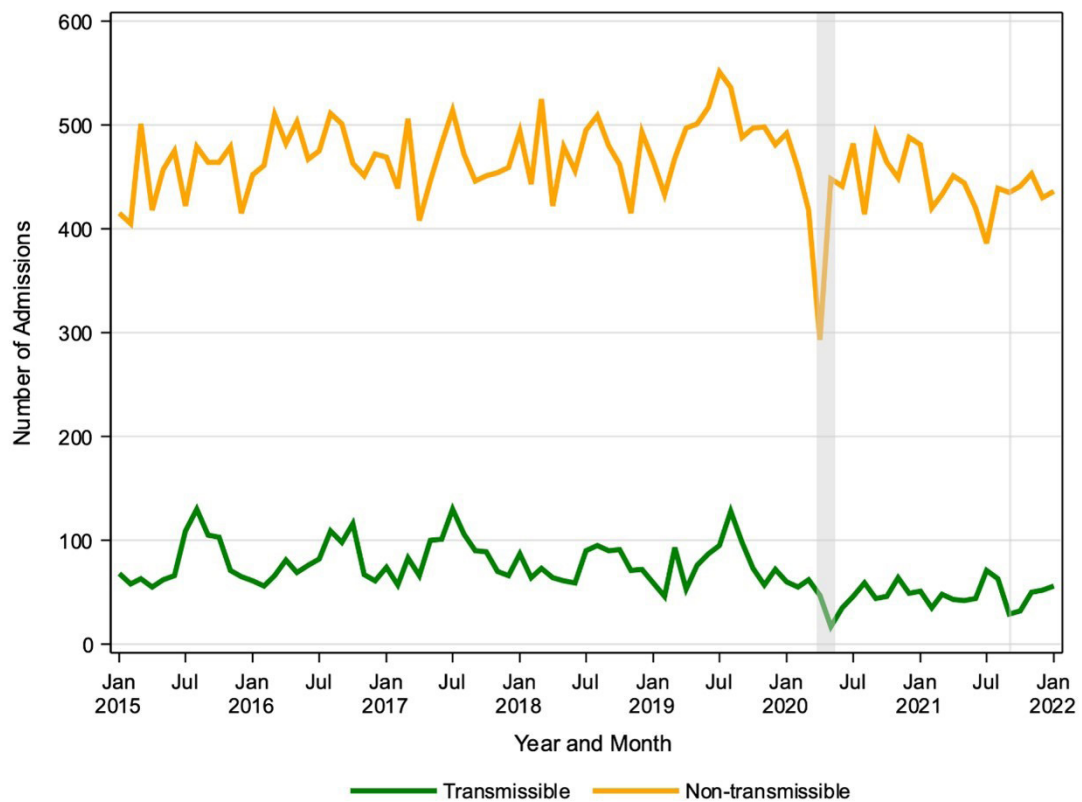


Table 1: Summary statistics for variables.

Variable	Overall N=47,407 (%)	Pre-lockdown N=34,581 (%)	2020 lockdown N=734 (%)	2021 lockdown N=105 (%)
Gender				
Female	26,293 (55.5)	19,325 (55.9)	404 (55.0)	56 (53.3)
Male	21,106 (44.5)	15,256 (44.1)	330 (45.0)	49 (46.67)
Ethnicity				
Māori	4,950 (10.4)	3,551 (10.3)	84 (11.4)	12 (11.4)
Pacific peoples	4,345 (9.2)	3,104 (9.0)	66 (9.0)	4 (3.8)
Other	38,112 (80.4)	27,926 (80.8)	584 (80.0)	89 (84.76)
Age				
16–64	16,623 (35.1)	12,040 (34.8)	247 (33.7)	35 (33.3)
≥65	30,784 (64.9)	22,541 (65.2)	487 (66.3)	70 (66.7)
Died inpatient	1,401 (3.0)	1,019 (2.9)	25 (3.4)	1 (1.0)
Living in a rest home	2,952 (6.2)	2,193 (6.3)	35 (4.8)	8 (7.6)
NZDep category				
Not deprived	29,433 (62.1)	21,367 (61.8)	460 (62.7)	72 (68.6)
Deprived	11,239 (23.7)	8,239 (23.8)	181 (24.7)	19 (18.1)
Very deprived	6,479 (13.7)	4,727 (13.7)	93 (12.7)	14 (13.3)
Missing	256 (0.5)	248 (0.7)	0 (0.0)	0 (0.0)
Transmissible disease	6,251 (13.2)	4,956 (14.3)	63 (8.6)	10 (9.5)

Table 2: Admission rates per 100,000 population for 2020 and 2021 lockdowns.

Classification	Pre-lockdown (baseline)	2020 lockdown			2021 lockdown		
	Rate (95% CI)	Rate (95% CI)	Rate ratio (95% CI)	P	Rate (95% CI)	Rate ratio (95% CI)	P
Overall	24.08 (23.59–24.58)	17.16 (15.07–19.53)	0.71 (0.63–0.81)	<.0001	18.14 (12.63–26.04)	0.75 (0.52–1.08)	0.13
Transmissible	3.44 (3.33–3.56)	1.50 (1.14–1.96)	0.44 (0.33–0.57)	<.0001	1.66 (0.81–3.38)	0.48 (0.24–0.98)	0.004
Non-transmissible	20.69 (20.21–21.18)	15.97 (13.82–18.45)	0.77 (0.67–0.89)	0.0005	15.74 (10.48–23.64)	0.76 (0.51–1.14)	0.19

Figure 3: Admission rate ratios for the 2020 and 2021 lockdowns compared to pre-lockdown rates.

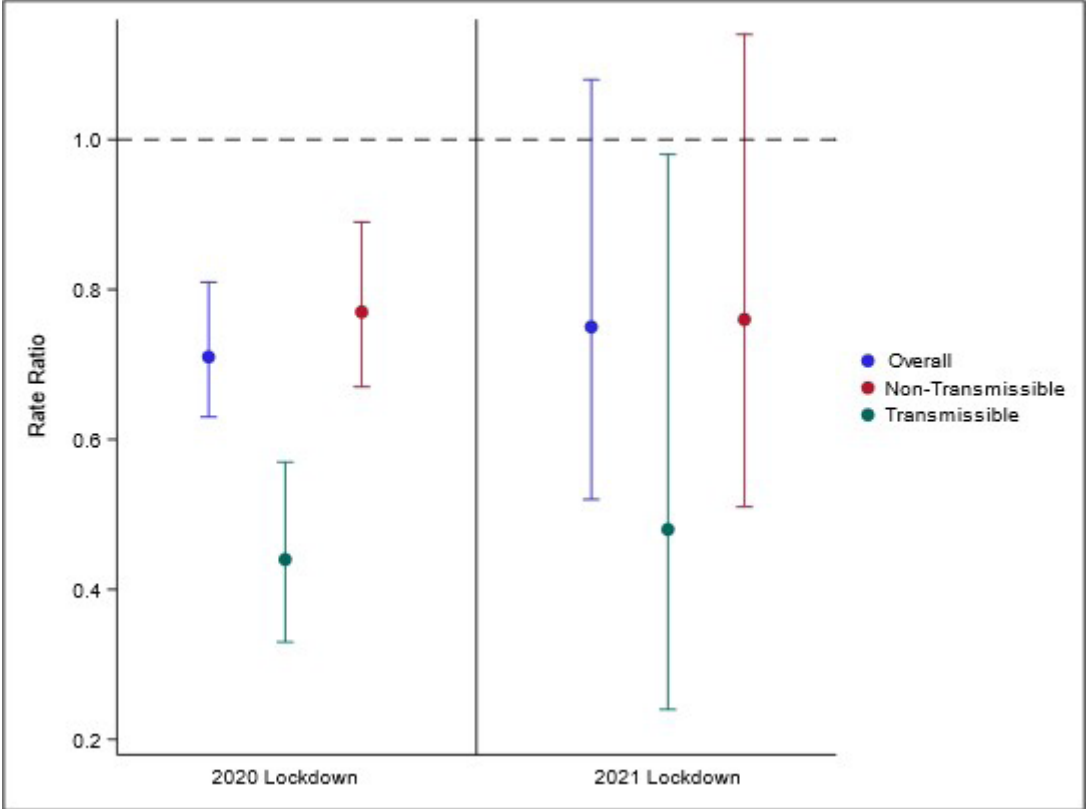


Figure 4: Interaction plot for relative rate of transmissible and non-transmissible admissions during the 2020 lockdown compared to baseline by sub-group.

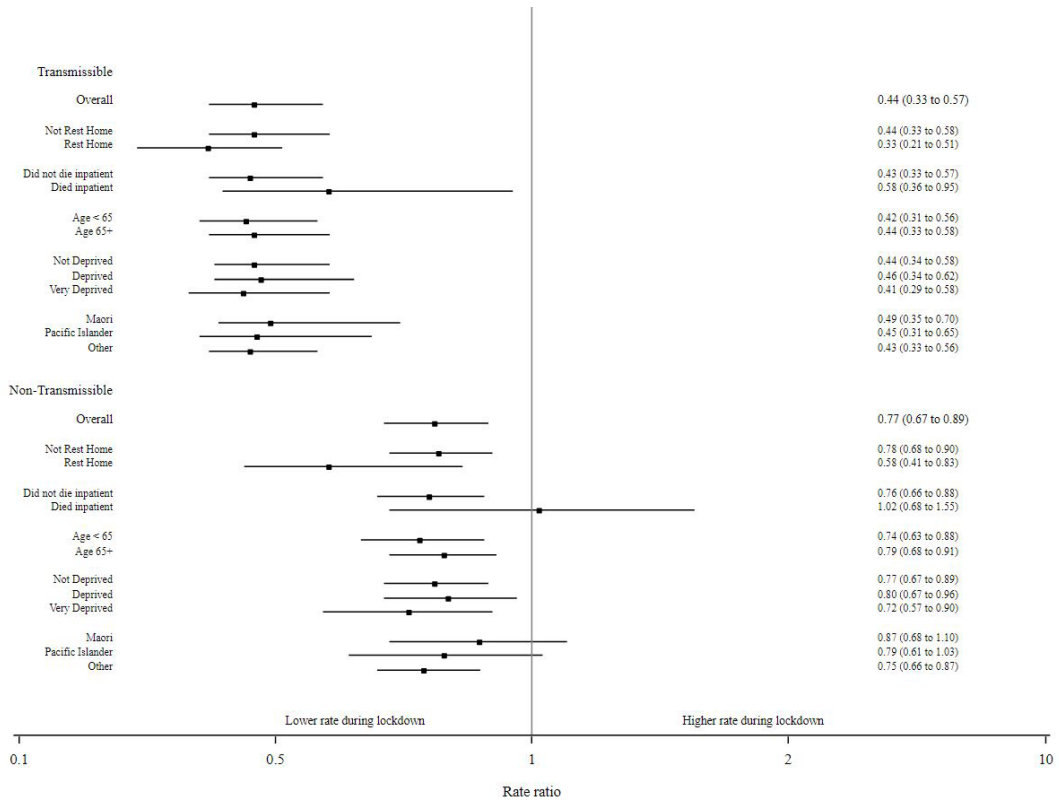


Figure 5: Transmissible admission rate per 100,000 population for fortnightly periods during and immediately after the 2020 lockdown.

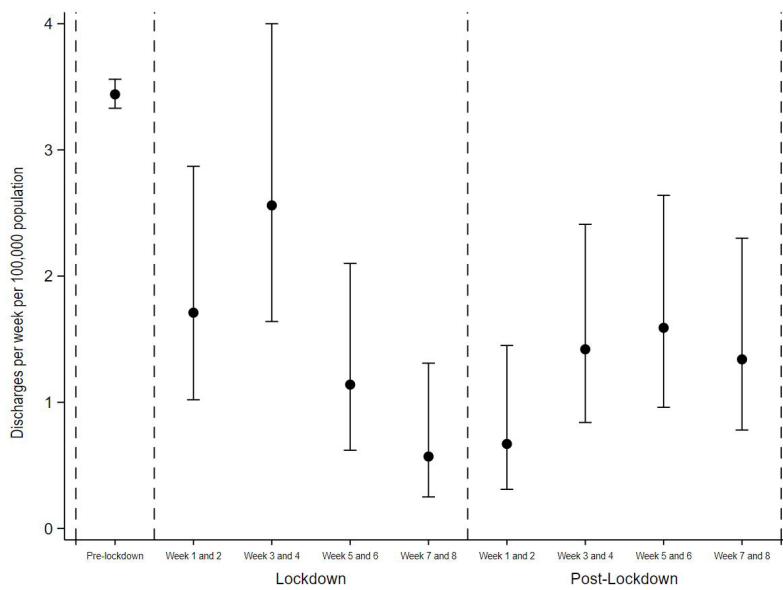


Figure 6: Non-transmissible admission rate per 100,000 population for fortnightly periods during and immediately after the 2020 lockdown.

