

Table 1: Urinary incontinence prevalence by age band and BMI category.

All	Raw proportion N/N (%)	Proportion (%) adjusted for sampling weights (95% confidence interval)
Age band (years)		
16–29	340/1,304 (26.1)	20.8 (18.1–23.6)
30–49	1,013/2,200 (46.1)	46.6 (43.7–49.4)
50–74	1,119/2,181 (51.3)	51.0 (48.3–53.8)
BMI categories		
<18.5	15/80 (18.8)	13.2 (5.8–20.6)
18.5–25	582/1,688 (34.5)	33.2 (31.3–36.2)
25–30	651/1,503 (43.3)	42.0 (38.7–45.3)
>30	1,088/2,106 (51.7)	51.6 (48.7–54.6)
BMI categories		
<18.5		
Age band (years)		
16–29	1/36 (2.8)	0.9 (0–2.8)
30–49	7/24 (29.2)	32.5 (10.0–55.0)
50–74	7/13 (35.0)	23.1 (4.1–42.1)
18.5–25		
Age band (years)		
16–29	102/470 (21.7)	17.1 (12.9–21.4)
30–49	254/665 (38.2)	39.5 (34.6–44.4)
50–74	226/533 (40.9)	42.3 (36.9–47.7)
25–30		
Age band (years)		
16–29	68/283 (24.0)	20.7 (14.8–26.6)
30–49	265/563 (47.1)	46.7 (41.2–52.2)
50–74	318/657 (48.4)	48.6 (43.5–53.6)
>30		
Age band (years)		
16–29	125/400 (31.3)	27.0 (21.7–32.4)
30–49	425/811 (52.4)	54.0 (49.2–58.88)
50–74	538/895 (60.1)	60.3 (56.0–64.6)

Table 2: Urinary incontinence prevalence by age band and parity.

All	Raw proportion N/N (%)	Proportion (%) adjusted for sampling weights (95% confidence interval)
Age band (years)		
16–29	340/1,304 (26.1)	20.8 (18.1–23.6)
30–49	1,013/2,200 (46.1)	46.6 (43.7–49.4)
50–74	1,119/2,181 (51.3)	51.0 (48.3–53.8)
Parity		
0	82/230 (35.7)	33.7 (26.2–41.3)
1	392/876 (44.8)	43.7 (39.2–48.2)
2	747/1,465 (51.3)	52.0 (48.6–55.4)
3+	876/1,643 (53.3)	55.2 (52.0–58.5)
Parity categories		
0		
Age band (years)		
16–29	29/91 (31.9)	34.2 (22.0–46.4)
30–49	29/91 (31.9)	25.8 (15.2–6.4)
50–74	24/48 (50)	52.1 (34.8–69.3)
1		
Age band (years)		
16–29	105/251 (41.8)	40.9 (33.0–48.8)
30–49	182/412 (44.2)	43.9 (37.3–50.6)
50–74	105/213 (49.3)	45.7 (36.5–54.9)
2		
Age band (years)		
16–29	61/135 (45.2)	41.3 (30.4–52.1)
30–49	329/643 (51.2)	52.9 (47.9–58.0)
50–74	357/678 (52.7)	52.4 (47.5–57.4)
3+		
Age band (years)		
16–29	41/117 (35.0)	38.1 (25.6–50.5)
30–49	348/634 (54.9)	56.3 (51.0–61.5)
50–74	487/892 (54.6)	55.8 (51.5–60.1)

Table 3: Urinary incontinence prevalence by parity and BMI category.

All	Raw proportion N/N (%)	Proportion (%) adjusted for sampling weights (95% confidence interval)
BMI category		
<18.5	15/80 (18.8)	13.2 (5.8–20.6)
18.5–25	582/1,688 (34.5)	33.2 (31.3–36.2)
25–30	651/1,503 (43.3)	42.0 (38.7–45.3)
>30	1,088/2,106 (51.7)	51.6 (48.7–54.6)
Parity		
0	82/230 (35.7)	33.7 (26.2–41.3)
1	392/876 (44.8)	43.7 (39.2–48.2)
2	747/1,465 (51.3)	52.0 (48.6–55.4)
3+	876/1,643 (53.3)	55.2 (52.0–58.5)
Parity categories		
0		
BMI category		
<18.5	0/2 (0)	NA
18.5–25	17/70 (24.3)	23.9 (11.1–36.6)
25–30	19/48 (36.6)	40.0 (22.6–57.3)
>30	31/73 (42.5)	36.3 (23.0–49.5)
1		
BMI category		
<18.5	2/8 (25)	18.2 (0–45.0)
18.5–25	111/292 (38.0)	38.7 (31.0–46.4)
25–30	104/225 (46.2)	46.3 (37.2–55.3)
>30	144/286 (50.4)	51.1 (43.3–58.8)
2		
BMI category		
<18.5	9/20 (45)	34.1 (10.2–58.0)
18.5–25	215/442 (48.6)	47.7 (41.8–53.5)
25–30	199/427 (46.6)	45.5 (39.4–51.5)

Table 3 (continued): Urinary incontinence prevalence by parity and BMI category.

>30	291/498 (58.4)	62.8 (57.1–68.4)
3+		
BMI category		
<18.5	2/10 (20)	38.0 (0–78.0)
18.5–25	143/36 (39.1)	44.9 (37.9–52.0)
25–30	244/461(52.9)	55.2 (49.2–61.1)
>30	450/737 (61.1)	60.7 (55.9–65.5)

Table 4: Association between urinary incontinence and age band, BMI category and parity.

Comparison	Odds ratio (95% confidence interval)	P-value
Age band–parity interaction	NA	0.14
Age band–BMI category interaction	NA	0.49
Age band (years) main effect		0.04
30–49 versus 16–29	1.5 (1.1–1.9)	
50–74 versus 16–29	1.5 (1.1–2.0)	
Parity–BMI category interaction		<0.001
Parity 0		
<18.5 versus 18.5–25	NA	
25–30 versus 18.5–25	2.2 (0.8–6.1)	
>30 versus 18.5–25	1.9 (0.8–4.8)	
Parity 1		
<18.5 versus 18.5–25	0.4 (0.06–2.3)	
25–30 versus 18.5–25	1.3 (0.8–2.2)	
>30 versus 18.5–25	1.7 (1.1–2.7)	
Parity 2		
<18.5 versus 18.5–25	0.6 (0.2–1.7)	
25–30 versus 18.5–25	0.9 (0.7–1.3)	
>30 versus 18.5–25	1.7 (1.1–2.7)	
Parity 3+		
<18.5 versus 18.5–25	0.8 (0.1–4.3)	
25–30 versus 18.5–25	1.5 (1.0–2.2)	
>30 versus 18.5–25	1.9 (1.3–2.7)	

Table 5: Urinary incontinence prevalence by age band and ethnicity.

All	Raw proportion N/N (%)	Proportion (%) adjusted for sampling weights (95% confidence interval)
Age band (years)		
16–29	340/1,304 (26.1)	20.8 (18.1–23.6)
30–49	1,013/2,200 (46.1)	46.6 (43.7–49.4)
50–74	1,119/2,181 (51.3)	51.0 (48.3–53.8)
Total	2,472/5,685 (43.5)	41.7 (40.0–43.4)
Ethnicity categories		
Non-Māori		
Age band (years)		
16–29	198/867 (22.8)	18.9 (15.8–22.0)
30–49	716/1,612 (44.4)	45.9 (42.7–49.0)
50–74	865/1,733 (49.9)	50.3 (47.3–53.4)
Total	1,779/4,212 (42.2)	41.2 (39.3–43.1)
Māori		
Age-band (years)		
16–29	142/497 (32.5)	29.2 (23.9–34.6)
30–49	297/588 (50.5)	51.1 (45.7–56.4)
50–74	254/448 (56.7)	57.5 (51.7–63.3)
Total	693/1,473 (47.1)	45.0 (41.7–48.3)
Non-Pacific		
Age band (years)		
16–29	299/1,153 (25.9)	20.8 (17.9–23.8)
30–49	951/2,051 (46.4)	46.8 (43.9–49.7)
50–74	1,097/2,125 (51.6)	51.7 (48.9–54.5)
Total	2,347/5,329 (44.0)	42.5 (40.7–44.3)
Pacific		
Age band (years)		
16–29	41/151 (27.2)	21.0 (13.4–28.6)
30–49	62/149 (41.6)	43.0 (33.0–53.1)

Table 5 (continued): Urinary incontinence prevalence by age band and ethnicity.

50-74	22/56 (39.3)	25.0 (13.1-36.9)
Total	125/356 (35.1)	29.6 (23.8-35.3)
Non-Asian		
Age band (years)		
16-29	327/1,145 (28.6)	24.7 (21.5-28.0)
30-49	952/2,000 (47.6)	48.6 (45.6-51.6)
50-74	1,096/2,106 (52.0)	51.8 (48.9-54.6)
Total	2,375/5,251 (45.2)	44.4 (42.5-46.2)
Asian		
Age band (years)		
16-29	13/159 (8.2)	5.3 (2.1-8.5)
30-49	61/200 (30.5)	34.1 (25.8-42.4)
50-74	23/75 (30.7)	36.9 (22.2-51.6)
Total	97/434 (22.4)	22.8 (17.6-27.4)
Non-European		
Age band (years)		
16-29	118/516 (22.9)	14.9 (11.4-18.5)
30-49	271/636 (42.6)	41.0 (35.6-46.3)
50-74	207/387 (53.5)	47.2 (39.9-54.5)
Total	596/1,539 (38.7)	31.9 (28.7-35.1)
European		
Age band (years)		
16-29	222/788 (28.2)	24.4 (20.6-28.2)
30-49	742/1,564 (47.4)	48.5 (45.2-51.9)
50-74	912/1,794 (50.8)	51.6 (48.6-54.6)
Total	1,876/4,146 (45.2)	44.8 (42.8-46.8)

Table 6: Association between urinary incontinence and ethnicity in adjusted models.

Comparison	Odds ratio (95% confidence interval)	P-value
Māori ethnicity		
Age band (years)		0.02
30–49 versus 16–29	1.5 (1.1–2.0)	
50–74 versus 16–29	1.5 (1.1–2.0)	
BMI category		<0.001
<18.5 versus 18.5–25	0.6 (0.3–1.3)	
25–30 versus 18.5–25	1.2 (1.0–1.5)	
30+ versus 18.5–24	1.8 (1.5–2.3)	
Parity		0.002
1 versus 0	1.6 (1.1–2.5)	
2 versus 0	2.0 (1.3–3.1)	
3+ versus 0	2.1 (1.4–3.2)	
Māori versus non-Māori	1.0 (0.8–1.2)	0.85
European ethnicity		
Age band (years)		0.03
30–49 versus 16–29	1.5 (1.1–1.9)	
50–74 versus 16–29	1.4 (1.1–2.9)	
BMI category		<0.001
<18.5 versus 18.5–25	0.6 (0.3–1.3)	
25–30 versus 18.5–25	1.2 (1.0–1.5)	
30+ versus 18.5–24	1.8 (1.5–2.3)	
Parity		0.001
1 versus 0	1.7 (1.1–2.6)	
2 versus 0	2.0 (1.3–3.1)	
3+ versus 0	2.2 (1.4–3.3)	
European versus non-European	1.2 (1.0–1.5)	0.09

Figure 1: Urinary incontinence prevalence by age, BMI and parity.

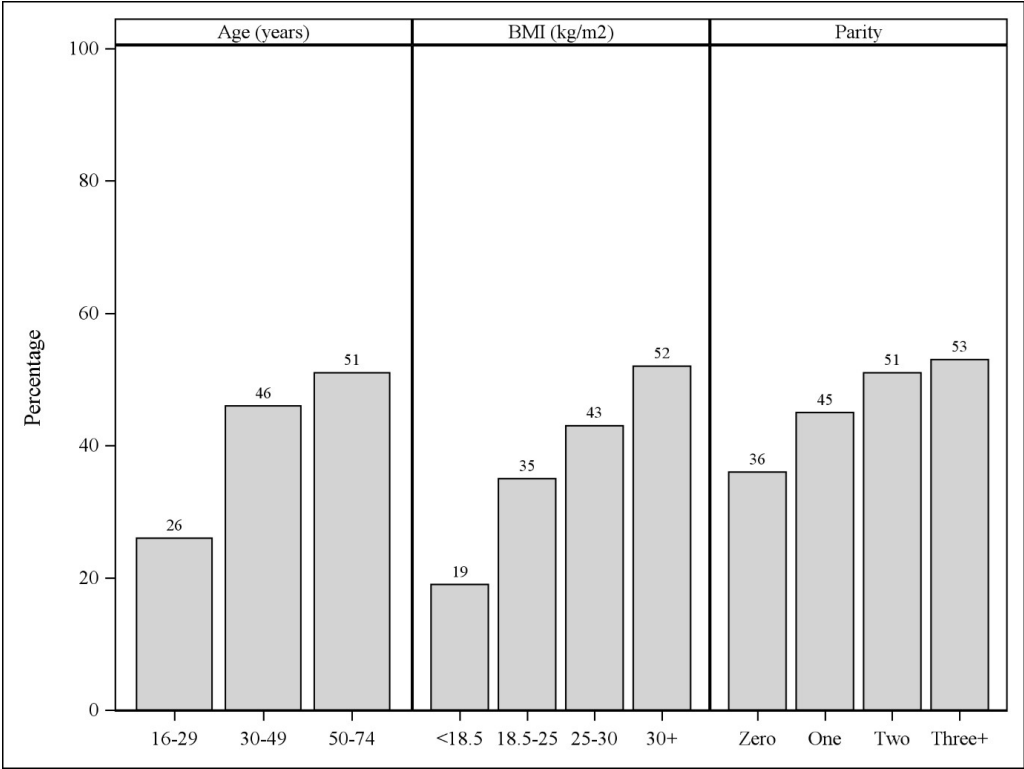


Figure 2: Urinary incontinence prevalence by ethnicity and age band.

