

**Table 1:** Characteristics of lung cancer patients with and without emergency department visits within 14 days before diagnosis date.

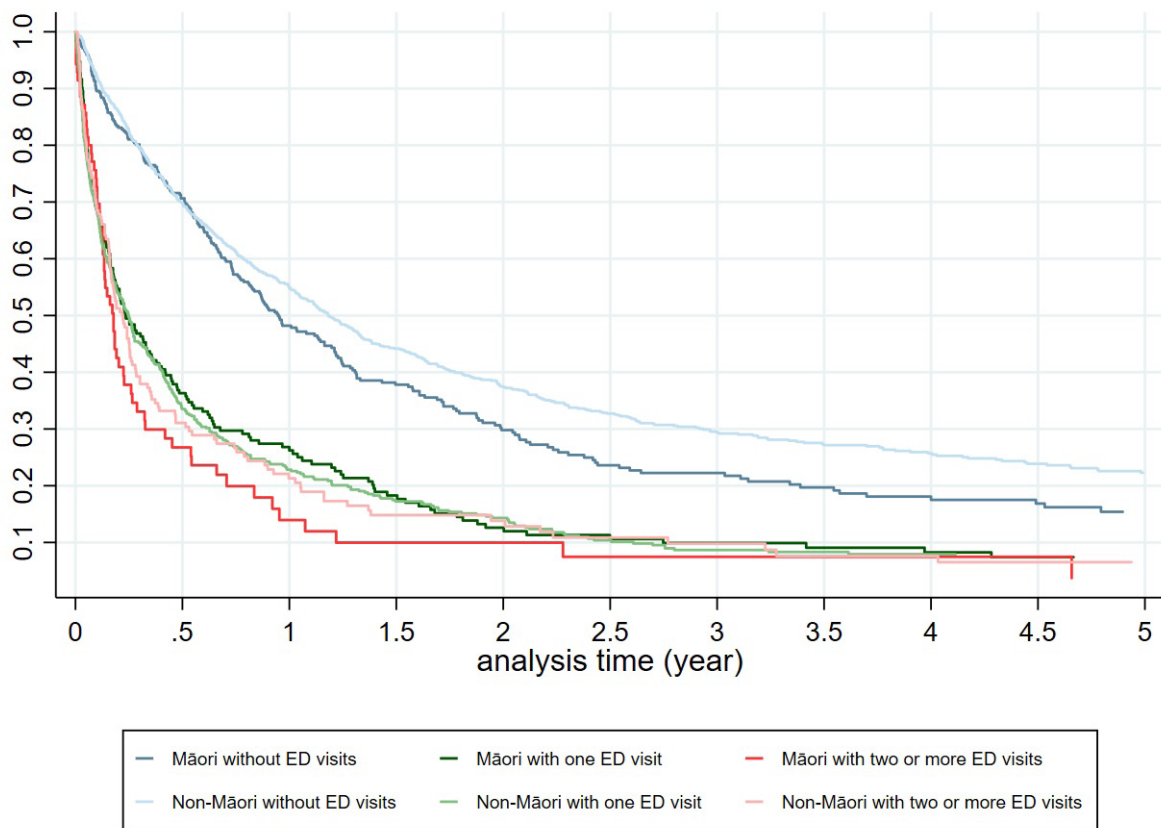
Factors		Without ED visits	With one ED visit	With two or more ED visits	P-value	P-value
		(1)	(2)	(3)	(2) vs (1)	(3) vs (1)
Age group	<50	42 (53.8%)	26 (33.3%)	10 (12.8%)	0.11	0.86
	50–54	62 (58.5%)	35 (33.0%)	9 (8.5%)		
	55–59	122 (63.9%)	48 (25.1%)	21 (11.0%)		
	60–64	183 (61.4%)	91 (30.5%)	24 (8.1%)		
	65–69	240 (62.7%)	108 (28.2%)	35 (9.1%)		
	70–74	287 (63.1%)	118 (25.9%)	50 (11.0%)		
	75–79	216 (59.7%)	107 (29.6%)	39 (10.8%)		
	>80	296 (56.5%)	181 (34.5%)	47 (9.0%)		
Gender	Female	740 (63.3%)	323 (27.6%)	106 (9.1%)	0.01	0.09
	Male	708 (57.7%)	391 (31.8%)	129 (10.5%)		
Ethnicity	Māori	350 (56.6%)	195 (31.6%)	73 (11.8%)	0.11	0.02
	Non-Māori	1,098 (61.7%)	519 (29.2%)	162 (9.1%)		
Rural/urban	Urban	747 (59.7%)	441 (35.3%)	63 (5.0%)	<0.01	<0.01
	Rural	696 (61.1%)	272 (23.9%)	172 (15.1%)		
	Unknown	5 (83.3%)	1 (16.7%)	0		
Smoking status	Current smoker	444 (59.8%)	229 (30.9%)	69 (9.3%)	<0.01	0.02
	Ex-smoker	769 (63.1%)	333 (27.3%)	116 (9.5%)		
	Never smoked	120 (61.9%)	57 (29.4%)	17 (8.8%)		
	Unknown	115 (47.3%)	95 (39.1%)	33 (13.6%)		
Cell type	NSCLC	1,039 (63.8%)	449 (27.6%)	141 (8.7%)	<0.01	<0.01
	SCLC	143 (49.8%)	95 (33.1%)	49 (17.1%)		
	Others	14 (82.4%)	2 (11.8%)	1 (5.9%)		
	Unknown	252 (54.3%)	168 (36.2%)	44 (9.5%)		
Cancer stage	I	282 (86.8%)	39 (12.0%)	4 (1.2%)	<0.01	<0.01
	II	113 (81.9%)	19 (13.8%)	6 (4.3%)		
	III	348 (75.5%)	87 (18.9%)	26 (5.6%)		
	IV	652 (47.5%)	534 (38.9%)	187 (13.6%)		
	Unknown	53 (53.0%)	35 (35.0%)	12 (12.0%)		

**Table 1 (continued):** Characteristics of lung cancer patients with and without emergency department visits within 14 days before diagnosis date.

<b>CCI score</b>	0	338 (60.4%)	166 (29.6%)	56 (10.0%)	0.13	0.39
	1	354 (64.4%)	148 (26.9%)	48 (8.7%)		
	2+	756 (58.7%)	400 (31.1%)	131 (10.2%)		
<b>Year of diagnosis</b>	2011–2014	416 (56.7%)	248 (33.8%)	70 (9.5%)	<0.01	0.93
	2015–2018	564 (60.3%)	283 (30.2%)	89 (9.5%)		
	2019–2021	468 (64.4%)	183 (25.2%)	76 (10.5%)		
<b>Total</b>		1,448 (60.4%)	714 (29.8%)	235 (9.8%)		

ED = emergency department; NSCLC = non-small cell lung cancer; SCLC = small cell lung cancer; CCI = Charlson Comorbidity Index.

**Figure 1:** Kaplan–Meier survival curves by ethnicity and emergency department visits.



**Table 2:** Adjusted odds ratios of emergency department visits.

<b>Variables</b>	<b>With ED visits vs without (95% CI)</b>	<b>With two or more ED visits vs with one ED visit (95% CI)</b>
<b>Age (years, continuous)</b>	1.00 (0.99–1.01)	0.99 (0.97–1.00)
<b>Gender</b>		
Female	Reference	Reference
Male	1.22 (1.02–1.47)*	1.03 (0.74–1.41)
<b>Ethnicity</b>		
Non-Māori	Reference	Reference
Māori	1.27 (1.03–1.57)*	1.03 (0.71–1.50)
<b>Rural/urban</b>		
Urban	Reference	Reference
Rural	0.94 (0.78–1.12)	4.65 (3.33–6.49)***
<b>Smoking status</b>		
Current smoker	Reference	Reference
Ex-smoker	0.86 (0.70–1.07)	1.46 (0.99–2.17)
Never smoked	1.08 (0.75–1.56)	1.41 (0.71–2.78)
Unknown	1.26 (0.88–1.79)	1.54 (0.85–2.80)
<b>Cell type</b>		
NSCLC	Reference	Reference
SCLC	1.45 (1.11–1.90)**	1.74 (1.12–2.69)*
Others	0.49 (0.13–1.86)	2.38 (0.18–31.95)
Unknown	1.59 (1.25–2.04)***	0.87 (0.56–1.35)
<b>Cancer stage</b>		
I	Reference	Reference
II	1.43 (0.83–2.46)	3.39 (0.80–14.31)
III	2.13 (1.43–3.15)***	3.27 (1.01–10.60)*
IV	7.06 (4.99–9.98)***	3.64 (1.23–10.82)*
Unknown	4.26 (2.43–7.49)***	3.60 (0.94–13.73)
<b>CCI score</b>		
0	Reference	Reference

**Table 2 (continued):** Adjusted odds ratios of emergency department visits.

1	0.93 (0.71–1.21)	1.18 (0.73–1.91)
2+	1.20 (0.96–1.51)	1.15 (0.76–1.72)
<b>Year of diagnosis</b>		
2011–2014	Reference	Reference
2015–2018	0.92 (0.74–1.14)	0.92 (0.62–1.35)
2019–2021	0.79 (0.63–1.00)*	1.46 (0.97–2.21)

\*\*\*p<0.001, \*\*p<0.01, \*p<0.05.

ED = emergency department; CI = confidence interval; NSCLC = non-small cell lung cancer; SCLC = small cell lung cancer; CCI = Charlson Comorbidity Index.

**Table 3:** Odds ratios of 1-year survival.

Variables	Unadjusted odds ratios (95% CI)	Adjusted odds ratios (95% CI)
<b>ED visits</b>		
Without	Reference	Reference
With one ED visit	0.25 (0.21–0.32)***	0.42 (0.32–0.54)***
With two or more ED visits	0.18 (0.12–0.27)***	0.33 (0.21–0.50)***
<b>Age</b> (years, continuous)	0.98 (0.97–0.98)***	0.97 (0.96–0.98)***
<b>Gender</b>		
Female	Reference	Reference
Male	0.65 (0.55–0.78)***	0.75 (0.60–0.92)**
<b>Ethnicity</b>		
Non-Māori	Reference	Reference
Māori	0.78 (0.64–0.96)*	0.75 (0.58–0.96)*
<b>Rural/urban</b>		
Urban	Reference	Reference
Rural	0.96 (0.80–1.13)	0.96 (0.77–1.18)
<b>Smoking status</b>		
Current smoker	Reference	Reference
Ex-smoker	1.10 (0.90–1.34)	1.39 (1.08–1.79)*
Never smoked	2.20 (1.57–3.08)***	2.74 (1.78–4.23)***
Unknown	0.33 (0.23–0.49)***	0.58 (0.35–0.96)*
<b>Cell type</b>		

**Table 3 (continued):** Odds ratios of 1-year survival.

NSCLC	Reference	Reference
SCLC	0.61 (0.46–0.81) <sup>***</sup>	1.08 (0.78–1.49)
Others	4.76 (1.31–17.38) <sup>*</sup>	2.51 (0.44–14.26)
Unknown	0.67 (0.53–0.84) <sup>***</sup>	0.67 (0.49–0.93) <sup>*</sup>
<b>Cancer stage</b>		
I	Reference	Reference
II	0.35 (0.20–0.59) <sup>***</sup>	0.35 (0.20–0.60) <sup>***</sup>
III	0.13 (0.08–0.19) <sup>***</sup>	0.12 (0.08–0.18) <sup>***</sup>
IV	0.03 (0.02–0.05) <sup>***</sup>	0.03 (0.02–0.05) <sup>***</sup>
Unknown	0.04 (0.02–0.07) <sup>***</sup>	0.09 (0.04–0.19) <sup>***</sup>
<b>CCI score</b>		
0	Reference	Reference
1	0.88 (0.68–1.12)	0.76 (0.56–1.03)
2+	0.69 (0.56–0.85) <sup>***</sup>	0.61 (0.46–0.80) <sup>***</sup>
<b>Year of diagnosis</b>		
2011–2014	Reference	Reference
2015–2018	1.08 (0.88–1.32)	1.02 (0.80–1.31)
2019–2021	1.37 (1.09–1.72) <sup>**</sup>	1.16 (0.87–1.55)

\*\*\*p<0.001, \*\*p<0.01, \*p<0.05.

CI = confidence interval; ED = emergency department; NSCLC = non-small cell lung cancer; SCLC = small cell lung cancer; CCI = Charlson Comorbidity Index.