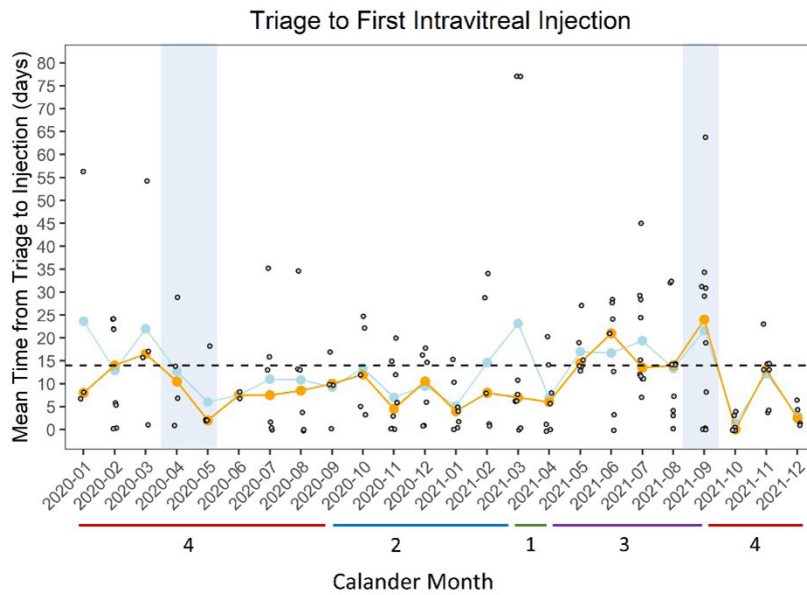


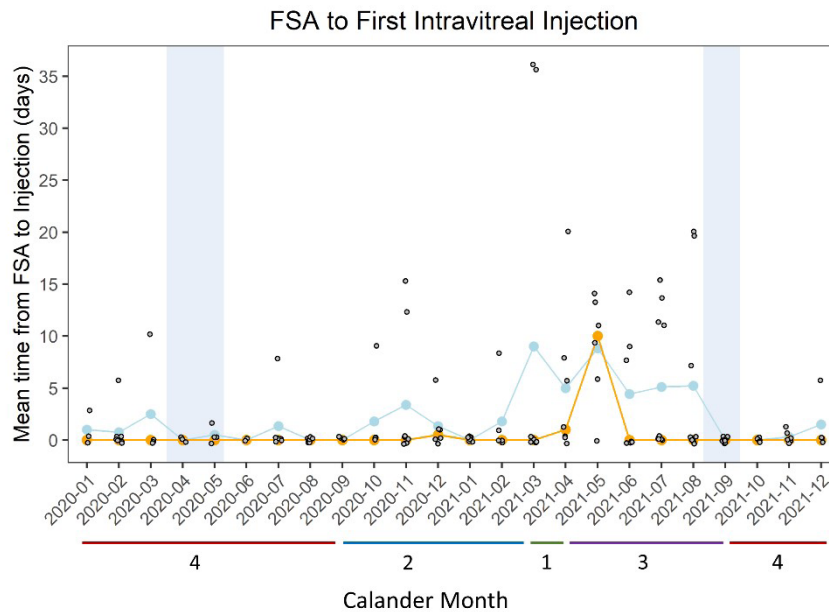
**Table 1:** Characteristics of patients diagnosed with nAMD at PNEC in 2020 and 2021 (N=135).

Characteristic	Number of patients, N/135 (%)
<b>Sex</b>	
Males	66 (49)
Females	69 (51)
<b>Ethnicity</b>	
NZ European	128 (95)
NZ Māori	2 (1)
Pacific	2 (1)
Other	3 (2)

**Figure 1:** Jitter plot with mean (blue) and median (yellow) time between referral triage and first intravitreal injection (N=145). The dashed line is at 14 days. The blue rectangles represent the timing of COVID-19 Level 3 and 4 restrictions affecting MidCentral DHB. The coloured bars indicate the number of nurse-injectors available at each time period.



**Figure 2:** Jitter plot with mean (blue) and median (yellow) time between FSA and first intravitreal injection (N=155). The blue rectangles represent the timing of COVID-19 Level 3 and 4 restrictions affecting MidCentral DHB. The coloured bars indicate the number of nurse-injectors available at each time period.



**Table 2:** Mean and median time in days from referral triage and FSA to first intravitreal injection during and outside of COVID-19 Level 3 and 4 restrictions.

Time period	N	Mean (SD)	Median	HLE	95% CI	P-value*
<b>Referral triage to first injection</b>						
During COVID-19 restrictions	6	13.33 (13.13)	10.5	4.84e-5	-9.0–13.0	0.86
Outside COVID-19 restrictions	139	13.06 (14.46)	10.0			
<b>FSA to first injection</b>						
During COVID-19 restrictions	6	0 (0)	0	0	-7.12e-5–0	0.15
Outside COVID-19 restrictions	149	2.58 (6.03)	0			

\*P-value calculated by Mann–Whitney test.

FSA = first specialist appointment; HLE = Hoges-Lehmann estimate; CI = confidence interval, calculated by the Hodges-Lehmann estimator.

**Table 3:** Mean and median time in days from referral triage and FSA to first injection based on the number of available nurse-injectors.

Number of available nurse-injectors	N	Mean (SD)	Median	P-value*
<b>Referral triage to first injection</b>				
1 Nurse-injector	8	23.13 (33.46)	7	0.06
2 Nurse-injectors	35	9.31 (9.12)	6	
3 Nurse-injectors	49	16.29 (13.32)	14	
4 Nurse-injectors	53	11.08 (12.81)	7	
<b>FSA to first injection</b>				
1 Nurse-injector	8	9.00 (16.66)	0	0.005
2 Nurse-injector	37	1.54 (3.66)	0	
3 Nurse-injector	50	4.36 (6.40)	0	
4 Nurse-injector	60	0.62 (1.97)	0	

\*P-values calculated by the Kruskal–Wallis test.

FSA = first specialist appointment.

**Table 4:** Median VA in LogMAR across the study period based on triage to first injection interval.

Triage to injection	N	Initial VA median (IQR)	Final VA median (IQR)
Fewer than 14 days	88	0.61 (0.36)	0.54 (0.54)
14–28 days	39	0.60 (0.45)	0.60 (0.57)
More than 28 days	18	0.65 (0.47)	0.60 (0.65)

VA = visual acuity; IQR = interquartile range.

**Table 5:** Visual outcomes of patients diagnosed with nAMD in 2020 and 2021.

Outcome measure	2020, N/65 (%)	2021, N/91 (%)
Eyes with stabilisation or improvement in visual acuity	55 (85)	72 (79)
Eyes with improvement in visual acuity	8 (12)	22 (24)