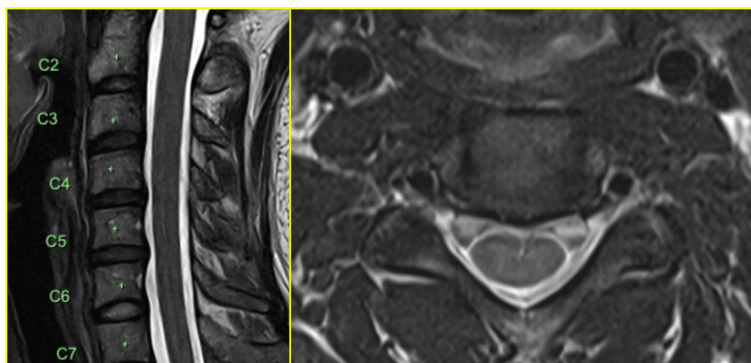
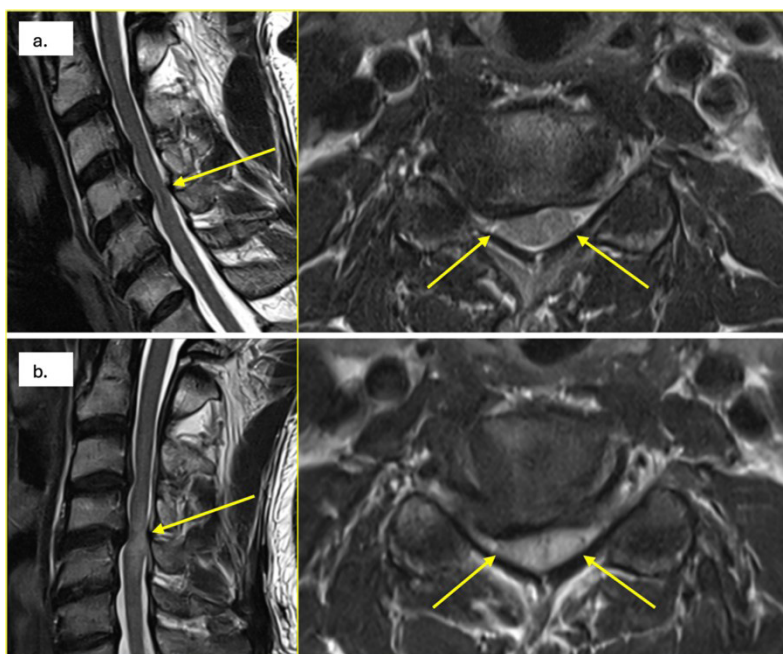


**Figure 1:** Example of a normal cervical MRI sagittal and axial series, without cervical stenosis.



MRI = magnetic resonance imaging.

**Figure 2a:** Initial cervical MRI for the patient in the present case, showing mild cervical stenosis at C4/5 with possible myelomalacia (1-year post-accident), and **2b:** a repeat cervical MRI revealing severe C4/5 cervical stenosis with more marked myelomalacia (2-years post-accident).



MRI = magnetic resonance imaging.