

Table 1: Summary of the ethnicity data from the two datasets.

	Ministry of Health data (N = 9,929)	NCIS data (N = 6,447)
Dates	1 Jan 2000–26 Dec 2018	29 Oct 2007–31 Dec 2019
Prioritised ethnicity N (%)		
Māori	1,980 (19.9%)	1,370 (21.3%)
Asian	433 (4.4%)	287 (4.5%)
Pacific	430 (4.3%)	331 (5.1%)
Other	7,086 (71.4%)	4,459 (69.2%)

Figure 1: Overview of the data from the Ministry of Health (left) and NCIS (right). The rate of suicide each year is plotted at the top. Below those are violin plots of the rates of suicide by season, year, lunar phase (divided into 29 equal parts, with inlayed lunar phase) and day of the week. Note that these represent the distribution of rates of suicide in each time “bin” over the whole dataset.

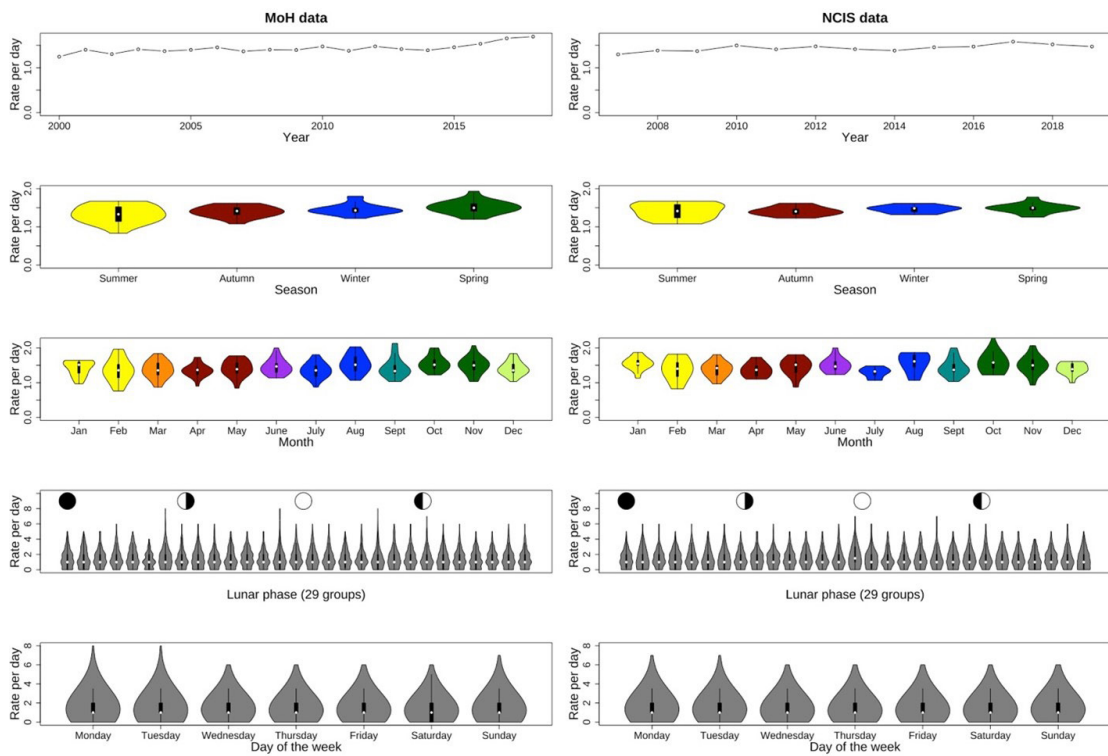


Figure 2: Rate of suicides by lunar phase with mean (black) and optimised cosine curves overlaid (red and green) in linear (left) and polar (right) coordinates for the 29 periods from the Ministry of Health data.

