

Figure 1: Abdominal X-ray with four linear chains of magnets in the right lower quadrant.

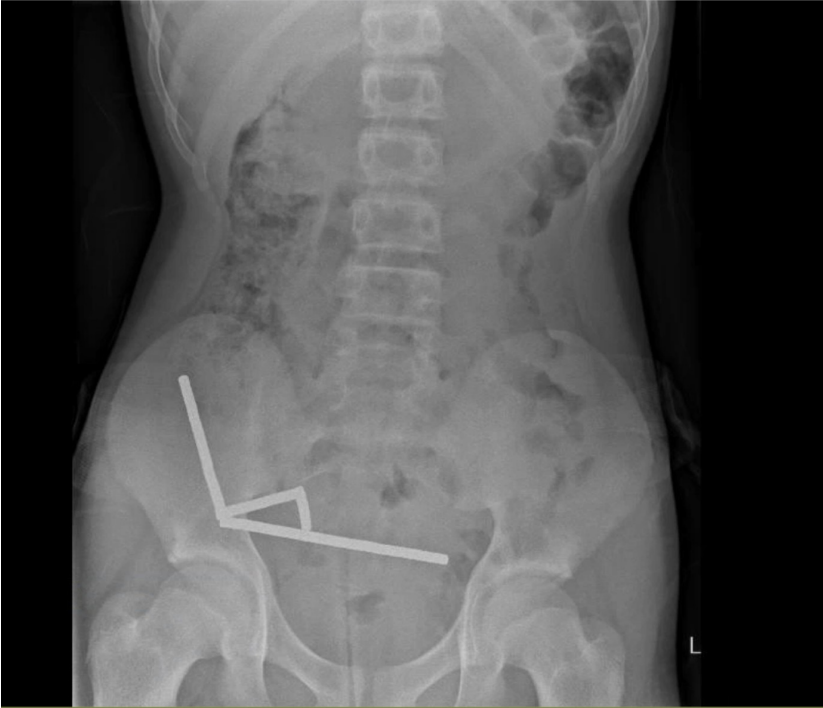


Figure 2: Intraoperative image with arrow pointing to two segments of bowel adhered by magnets.

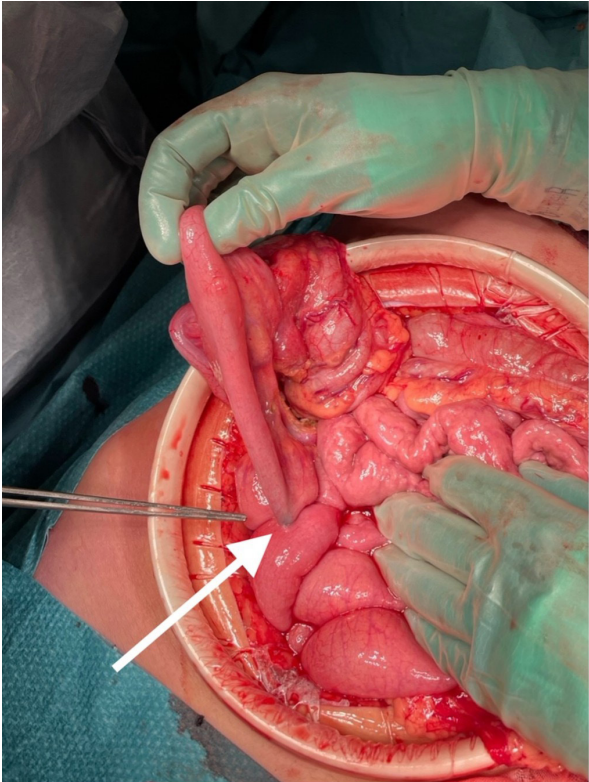


Figure 3: Intraoperative image with circle indicating area of pressure necrosis on the caecum and arrow pointing to chain of magnets in the terminal ileum.

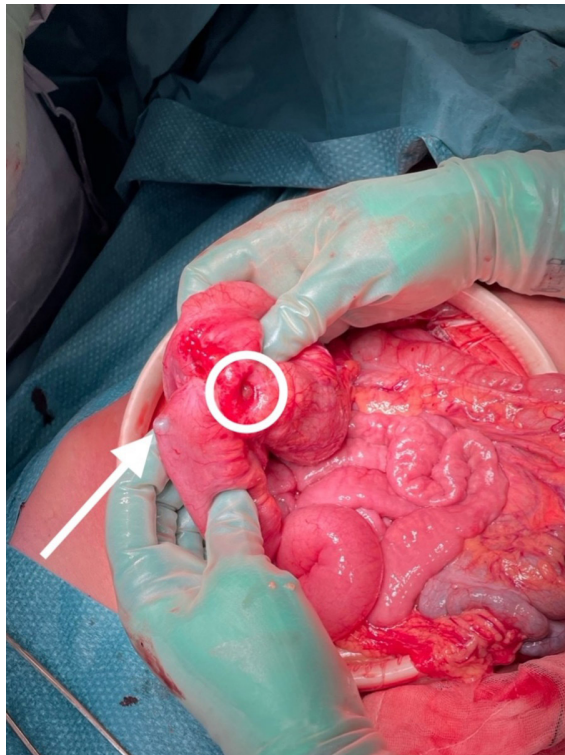


Figure 4: Approximately 80–100 high-powered magnets retrieved from operation.

