

Figure 1: CT-Angiography showing bowel perforation.

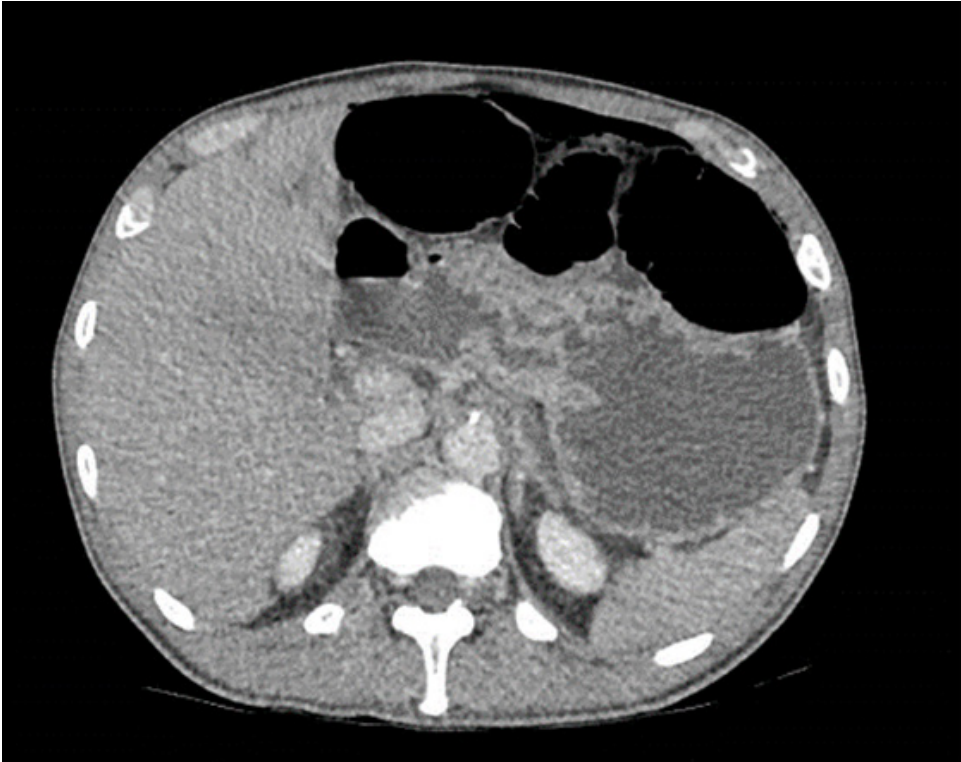


Figure 2: Operative specimen photo showing bowel perforations in ischaemic ileum.



Figure 3: Transition point of ischaemic—dilated bowel.



Figure 4: Colonoscopy showing mild ileitis.



Figure 5: Terminal ileum specimen—showed small artery vasculitis on histology.

