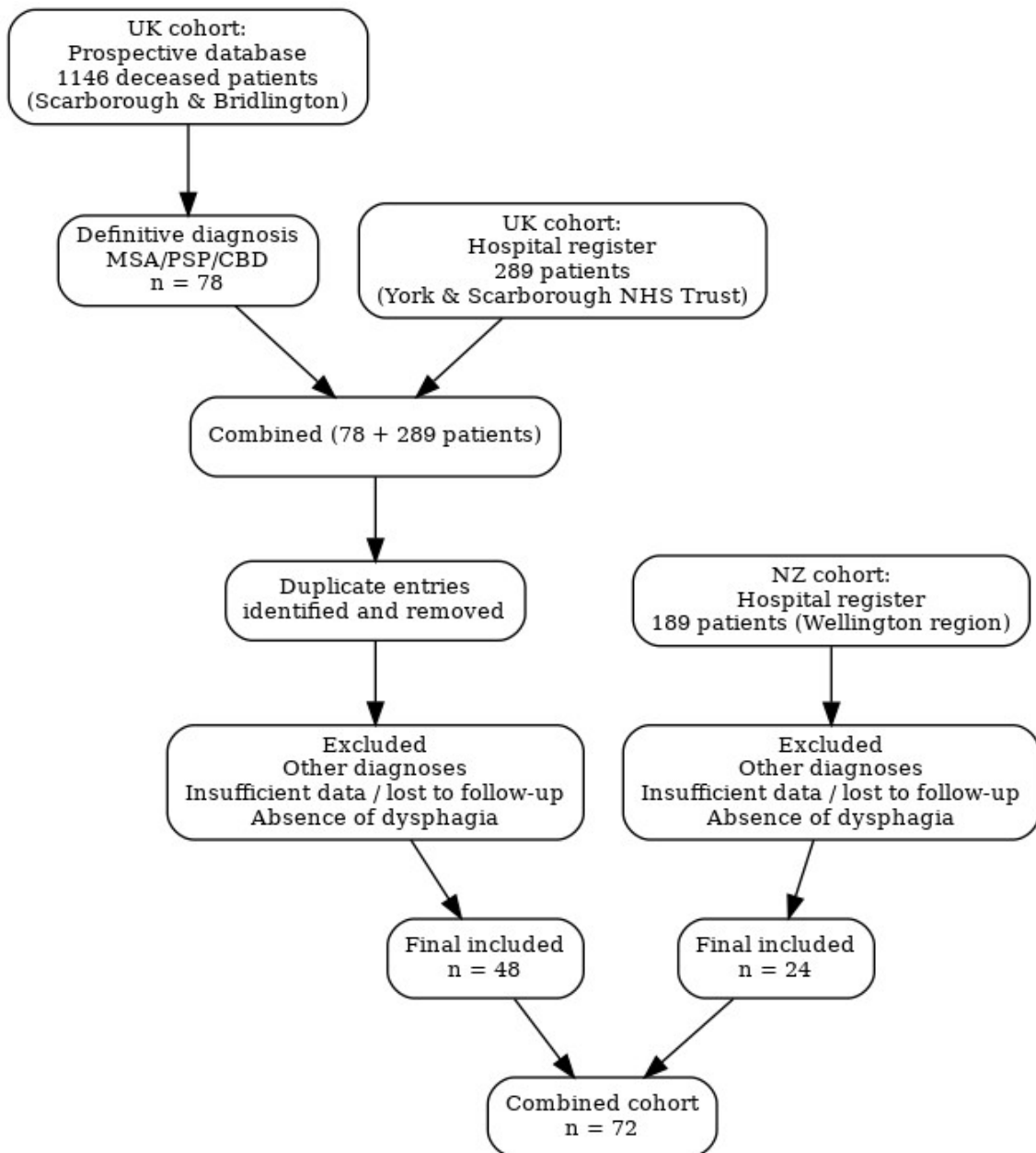
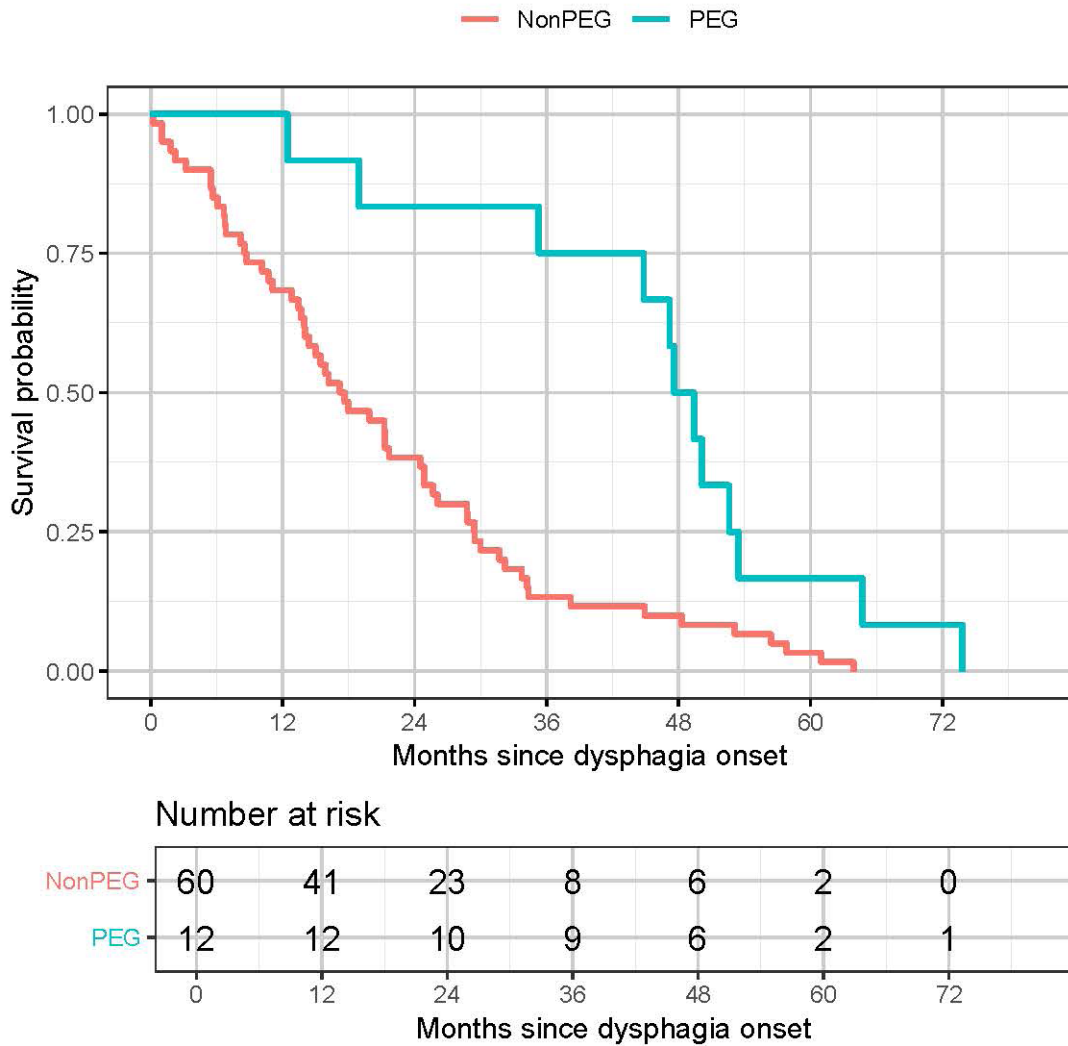


**Figure 1:** Patient selection flow diagram.



Patients identified from United Kingdom (UK) and New Zealand databases were screened for atypical parkinsonian syndromes. After removal of duplicates (UK) and exclusion for alternative diagnoses, insufficient data/lost to follow-up, or absence of dysphagia, 48 UK and 24 New Zealand patients were included, giving a combined cohort of 72.

**Figure 2:** Kaplan–Meier survival curves comparing percutaneous endoscopic gastrostomy (PEG) and non-PEG patients from the onset of dysphagia.



The red line represents patients who received PEG, while the blue line represents those who did not.

**Table 1:** Characteristics of patients with and without percutaneous endoscopic gastrostomy (PEG) insertion.

Characteristic	PEG not inserted N/60(%)	PEG inserted N/12(%)
<b>Gender</b>		
Female	18 (30)	3 (25)
Male	42 (70)	9 (75)
<b>Diagnosis</b>		
MSA (multiple system atrophy)	17 (28)	5 (42)
PSP (progressive supranuclear palsy)	31 (52)	6 (50)
CBD (corticobasal degeneration)	12 (20)	1 (8)
<b>Country of residence</b>		
United Kingdom	37 (62)	11 (92)
New Zealand	23 (38)	1 (8)

Patient demographics, diagnoses and country of residence are shown by PEG status. Baseline characteristics, except for age and country of residence, were broadly similar between both groups.

**Table 2:** Survival analysis (percutaneous endoscopic gastrostomy [PEG] versus non-PEG).

Analysis	Group	N patients	Median survival, months (95% CI)	HR (95% CI, p)	HR sex/age adjusted (95% CI, p)
Total cohort	Non-PEG	60	17.4 (14.0–24.9)	-	-
	PEG	12	48.8 (44.8–NA)	0.32 (0.16–0.65, 0.001)	0.38 (0.18–0.81, 0.013)
Sensitivity (52–73 years)	Non-PEG	25	17.9 (14.4–32.2)	-	-
	PEG	12	48.8 (44.8–NA)	0.39 (0.19–0.83, 0.015)	0.34 (0.15–0.81, 0.015)

95% CI = 95% confidence interval; HR = hazard ratio.

Median survival times and hazard ratios (HRs) from Cox regression are shown for the total cohort and for a sensitivity analysis restricted to patients aged 52–73 years. Both crude and age/sex-adjusted estimates are presented.

**Table 3:** Aspiration pneumonia outcomes (percutaneous endoscopic gastrostomy [PEG] versus non-PEG).

Analysis	Group	Admissions	Person-years	Rate per PY (95% CI)	IRR (95% CI, p)	IRR sex/age adjusted (95% CI, p)
Total cohort	Non-PEG	34	106.3	0.32 (0.22–0.45)	-	-
	PEG	24	46.0	0.52 (0.34–0.78)	1.63 (0.96–2.74, 0.066)	1.41 (0.74–2.68, 0.297)
Stage-matched	Late-stage non-PEG	27	39.8	0.68 (0.45–0.99)	-	-
	Post-PEG	13	17.2	0.76 (0.40–1.29)	1.12 (0.56–2.12, 0.744)	1.40 (0.57–3.38, 0.452)

PY = person-years; 95% CI = 95% confidence interval; IRR = incidence rate ratio. Incidence rates and incidence rate ratios are shown for the total cohort and for a stage-matched analysis (late-stage non-PEG versus post-PEG). Both crude and age/sex-adjusted estimates are presented.