

Figure 1: Mid-oesophageal four-chamber transoesophageal echocardiography (TOE), demonstrating a) the size of the larger right atrial thrombus.

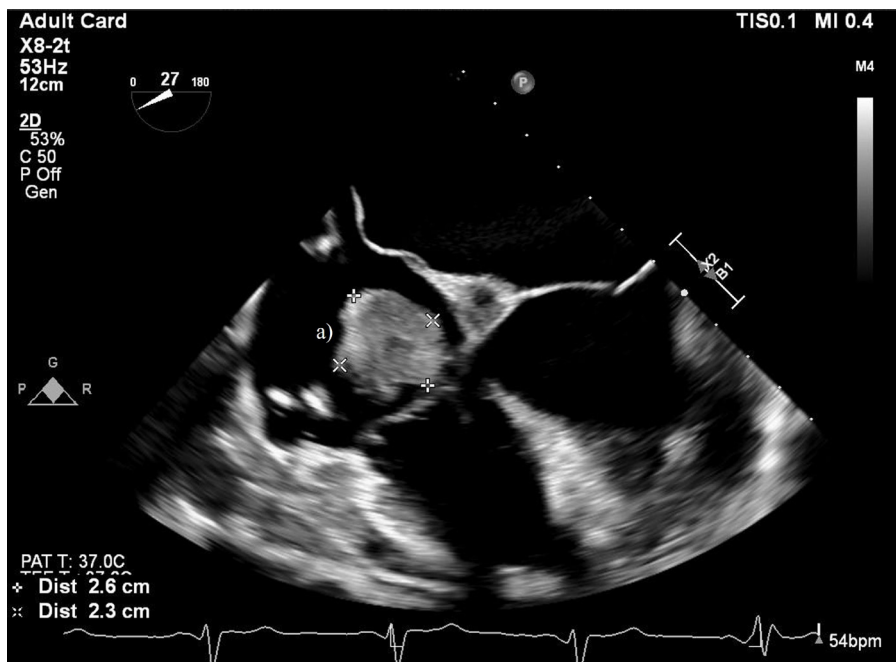


Figure 2: Mid-oesophageal right ventricular inflow-outflow tract transoesophageal echocardiography (TOE), highlighting a) the larger right atrial thrombus, b) the smaller thrombus extending into the inferior vena cava, and c) the patent foramen ovale.

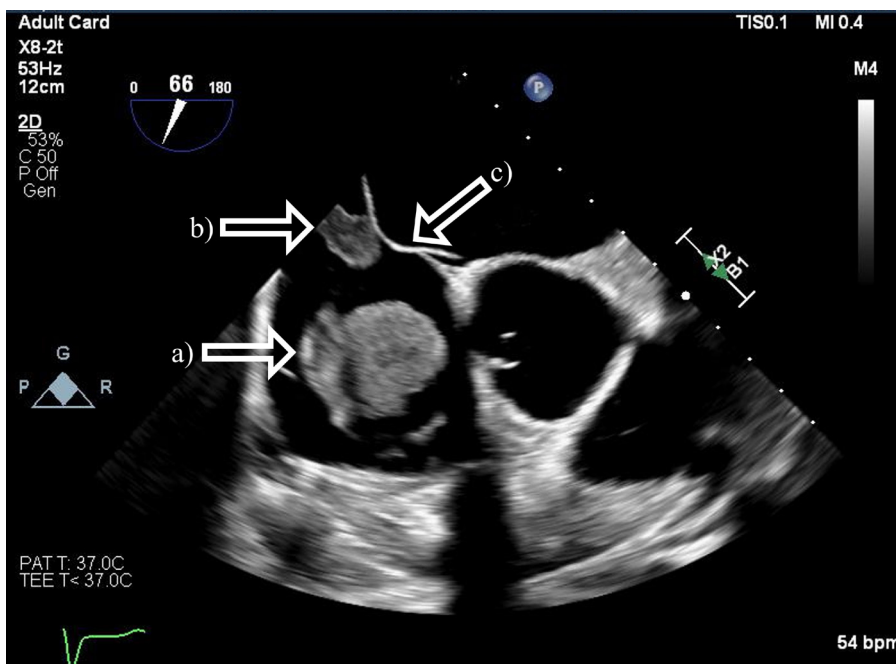


Figure 3: Intraoperative thoracoscopic view into the right atrium, highlighting a) the larger thrombus, and b) a pacemaker lead encased in thrombus.

