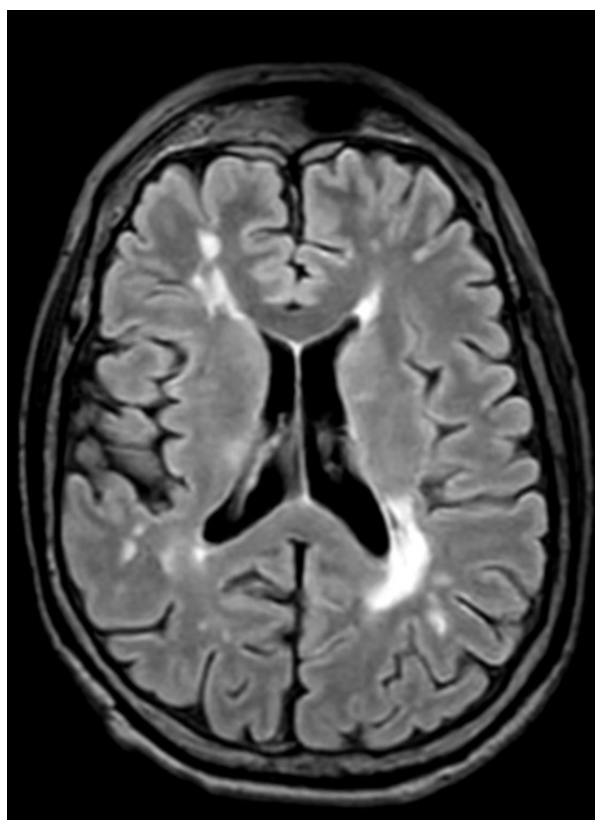


**Table 1:** Cerebrospinal fluid (CSF) results.

CSF test, unit	Results	Reference range
Protein, g/L	0.62	0.15-0.40
White cell, $\times 10^6$ /L	1	<5
Abeta1-42, ng/L	211	>1,030
P-tau181, ng/L	25.2	$\leq 27$
Total-tau, ng/L	201	$\leq 300$
Total-tau/abeta1-42 ratio	0.95	$\leq 0.28$
Neurofilament light (NfL), ng/L	330	$\leq 85$

**Figure 1:** Axial T2 fluid-attenuated inversion recovery imaging demonstrates multiple bilateral periventricular and deep white matter hyperintense foci.



**Figure 2:** Susceptibility-weighted imaging demonstrates numerous bilateral microhaemorrhages in a peripheral distribution.



**Figure 3:** Sagittal T1-weighted brain magnetic resonance imaging shows right superior frontal lobe cystic encephalomalacia with overlying skull and scalp defect.

